

		1-Oct-05	1-Nov-05	1-Dec-05	1-Jan-06	1-Feb-06	1-Mar-06
MTOW-01	Snicarte	39.9	40.08	40.12	40.3	40.09	39.88
MTOW-02	Easton		12.93	12.81	12.73	12.21	12.27
MTOW-03	Wildlife Refuge		19.52	19.89	20.21	20.46	20.56
MTOW-04	Sand Ridge		15.27	15.29	15.62	15.83	16
MTOW-06	Tree Nursery		20.7	20.8	20.91	20.68	20.48
MTOW-07	Rest Area		20.48	20.73	20.98	21.17	21.23
MTOW-08	Green Valley		24.53	24.82	25.11	25.41	25.56
MTOW-10	San Jose		30.14	30.14	30.14	30.05	30.39
MTOW-11	Mason City		32.82	33.08	33.31	33.49	33.69
MTOW-12	Hahn Farm		17.60	17.89	18.16	18.10	18.10
MTOW-13	Talbott Tree Farm		38.98	38.98	38.98	39.04	39.06

Snicarte #2

		1-Jan-08	1-Feb-08	6-Mar-08	2-Apr-08	1-May-08	5-Jun-08
	Well Dry		40.21	39.72	39.06	38.55	38.02
		12.27	11.51	9.73	10.36	10.12	6.99
		20.54	20.34	20.07	19.85	19.57	19.22
		16.36	16.58	16.63	16.68	16.48	16.54
		19.75	N/A	17.89	17.78	17.46	17.49
		21.62	21.15	20.59	20.43	20.13	19.82
		25.20	N/A	24.40	24.15	23.94	23.85
		30.69	30.50	30.11	30.20	29.85	29.34
		35.66	35.76	35.58	35.47	35.33	35.10
		18.25	N/A	17.08	16.84	16.29	16.01
		38.61	38.54	38.28	38.06	37.85	37.80
		21.82	21.7	20.63	20.09	19.58	18.87

		1-Apr-10	3-May-10	1-Jun-10	1-Jul-10	3-Aug-10	1-Sep-10
MTOW-01	Snicarte	NA	NA	NA	NA	NA	NA
MTOW-02	Easton	5.11	6.00	4.71	4.85	6.10	7.99
MTOW-03	Wildlife Refuge	10.26	10.54	9.58	9.62	9.74	NA
MTOW-04	Sand Ridge	7.82	7.86	7.38	6.32	5.48	5.83
MTOW-06	Tree Nursery	11.65	12.25	11.74	10.73	11.74	12.88
MTOW-07	Rest Area	8.89	9.08	7.98	7.71	7.93	8.68
MTOW-08	Green Valley	15.59	15.91	15.01	12.88	14.02	15.17
MTOW-10	San Jose	23.69	23.57	23.08	22.36	22.85	23.58
MTOW-11	Mason City	23.56	24.36	22.14	19.20	18.76	20.08
MTOW-12	Hahn Farm	8.51	8.96	8.23	8.16	8.25	9.26
MTOW-13	Talbott Tree Farm	31.93	32.13	32.18	31.92	31.39	31.66
	Snicarte #2	16.57	17.02	14.38	14.01	13.81	14.91

		1-Nov-11	13-Dec-11	1-Jan-12	1-Feb-12	1-Mar-12	4-Apr-12
MTOW-01	Snicarte	NA	NA	NA	NA	NA	NA
MTOW-02	Easton	10.54	10.37	9.55	9.93	10.08	10.16
MTOW-03	Wildlife Refuge	14.28	14.82	14.93	15.18	NA	15.85
MTOW-04	Sand Ridge	8.15	8.56	8.66	8.83	8.97	9.43
MTOW-06	Tree Nursery	16.37	16.99	16.90	17.05	17.22	17.44
MTOW-07	Rest Area	12.56	13.06	13.12	13.48	13.74	14.09
MTOW-08	Green Valley	20.64	21.46	21.65	22.09	22.44	22.98
MTOW-10	San Jose	27.33	27.56	27.65	27.91	28.16	28.47
MTOW-11	Mason City	27.53	28.44	28.75	29.34	29.59	30.33
MTOW-12	Hahn Farm	12.79	13.05	12.79	13.12	13.27	13.53
MTOW-13	Talbott Tree Farm	34.45	34.65	34.73	34.83	34.92	35.08

	Snicarte #2	18.39	18.25	17.75	17.93	18.10	18.27
--	-------------	-------	-------	-------	-------	-------	-------

		5-Jun-13	9-Jul-13	1-Aug-13	4-Sep-13	1-Oct-13	3-Dec-13
MTOW-01	Snicarte	NA	NA	NA	NA	NA	NA
MTOW-02	Easton	3.65	7.88	9.68	11.92	8.23	11.82
MTOW-03	Wildlife Refuge	16.90	15.10	15.42	16.34	16.78	17.48
MTOW-04	Sand Ridge	12.37	11.39	11.20	11.53	11.80	12.25
MTOW-06	Tree Nursery	15.54	14.51	15.26	17.63	17.72	17.97
MTOW-07	Rest Area	15.74	15.04	15.51	16.22	16.62	17.21
MTOW-08	Green Valley	24.59	22.82	22.68	23.13	23.57	24.25
MTOW-10	San Jose	29.62	29.41	30.22	32.47	31.42	30.75
MTOW-11	Mason City	30.08	33.05	33.01	33.19	33.39	33.83
MTOW-12	Hahn Farm	12.41	12.41	13.06	14.18	14.62	15.11
MTOW-13	Talbott Tree Farm	36.73	35.32	35.69	36.46	36.76	36.88

	Snicarte #2	15.54	16.13	16.47	18.04	18.04	17.75
--	-------------	-------	-------	-------	-------	-------	-------

MTOW-14 Mason City Deep
MTOW-15A Ellsbury Lake Deep
MTOW-15B Ellsbury Lake Shallow

1-Apr-06	1-May-06	1-Jun-06	1-Jul-06	1-Aug-06	1-Sep-06	1-Oct-06	1-Nov-06	1-Dec-06
39.82	39.48	39.22	39.84	Well Dry	Well Dry	Well Dry	Well Dry	Well Dry
11.69	10.8	10.95	11.99	12.43	13.2	13.24	13.14	12.77
20.71	20.21	20.06	20.46	20.98	21.14	21.23	21.28	21.32
16.35	16.6	16.78	16.93	17.04	17.10	17.27	17.2	17.13
20.4	19.96	19.68	20.4	21.63	21.46	21.45	21.36	21.28
21.35	20.95	20.87	21.46	21.92	22.14	22.32	22.48	22.6
25.78	25.98	25.91	25.99	26.10	26.25	26.39	26.53	26.73
30.55	30.37	30.66	31.86	31.29	31.86	31.9	31.78	31.44
33.98	34.05	34.08	34.19	34.40	34.56	34.73	34.9	35.15
18.15	17.12	17.32	17.97	18.36	18.63	18.86	19.07	19.25
39.08	39.09	39.13	39.50	39.99	40.28	40.25	40.15	40.00

1-Jul-08	1-Aug-08	2-Sep-08	1-Oct-08	4-Nov-08	9-Dec-08	6-Jan-09	2-Feb-09	1-Mar-09
37.08	36.94	37.71	35.09	35.01	35.49	35.32	35.85	35.89
9.85	9.83	11.29	6.74	8.43	9.61	7.45	9.37	8.02
18.24	17.90	18.15	17.09	16.51	16.44	16.37	16.42	16.60
16.39	16.17	16.18	N/A	15.57	N/A	N/A	14.93	14.78
17.49	18.06	18.75	16.27	16.07	16.43	16.39	16.61	16.81
19.63	19.83	20.14	18.57	18.63	18.25	18.12	18.09	18.22
23.54	23.38	23.68	22.89	22.46	22.32	22.17	22.01	22.07
29.56	29.77	30.44	29.03	28.80	28.88	28.26	28.57	28.34
34.64	33.99	33.69	32.54	32.31	32.31	32.13	32.31	32.25
15.90	16.07	16.56	14.80	14.65	14.76	14.54	14.64	14.72
38.07	38.48	38.84	38.26	37.12	36.78	36.68	36.72	36.79
18.14	18.09	19.03	16.32	16.43	16.84	16.43	17.08	17.07

1-Oct-10	1-Nov-10	1-Dec-10	1-Jan-11	7-Feb-11	1-Mar-11	11-Apr-11	1-May-11	1-Jun-11
NA	NA	NA	NA	NA	NA	NA	NA	NA
6.29	7.00	7.86	5.15	7.74	4.70	7.11	4.35	5.49
10.79	11.22	11.61	12.01	11.8	11.61	11.06	10.26	10.36
6.20	6.41	6.51	6.76	6.87	6.97	6.89	7.02	7.03
13.60	13.96	14.39	14.64	14.83	14.46	13.91	NA	13.10
9.04	9.62	10.06	9.92	10.75	9.80	9.97	8.75	8.99
16.18	17.07	17.78	18.42	18.74	18.77	18.68	18.17	18.03
23.78	24.25	24.58	24.64	25.42	24.99	25.58	25.02	24.99
22.14	24.11	25.13	25.63	26.13	25.14	24.16	23.23	23.18
9.48	10.04	10.50	10.44	10.83	10.02	9.96	8.74	8.75
31.77	31.97	32.21	32.50	32.85	33.05	33.19	33.23	33.02
16.35	16.76	15.47	17.16	15.93	15.15	15.74	15.21	15.31

1-May-12	1-Jun-12	3-Jul-12	1-Aug-12	4-Sep-12	1-Oct-12	1-Nov-12	6-Dec-12	1-Jan-13
NA	NA	NA	NA	NA	NA	NA	NA	NA
10.31	10.62	11.91	13.39	13.89	13.65	13.12	13.01	12.95
15.99	16.48	17.29	18.21	19.01	19.43	19.73	19.91	20.12
9.71	10.05	10.42	10.84	11.39	11.92	12.56	12.76	12.92
17.61	18.26	20.22	21.50	21.90	21.81	21.66	21.48	21.39
14.33	14.82	15.64	16.78	17.74	18.23	18.63	19.00	19.32
23.27	23.66	24.14	24.73	25.45	25.86	26.26	26.58	26.81
28.64	29.12	30.87	32.99	32.49	32.48	32.15	32.03	32.15
30.66	31.13	31.62	32.03	32.37	32.69	32.77	33.12	33.37
13.68	14.19	15.06	16.56	17.05	17.27	17.19	17.38	17.60
35.17	35.66	36.72	38.18	38.84	38.73	38.54	38.42	38.37
18.46	19.10	20.54	22.05	22.76	22.78	22.36	22.11	22.12

3-Feb-14	1-Apr-14	1-May-14	4-Jun-14	3-Jul-14	1-Aug-14	5-Sep-14	2-Oct-14	2-Dec-14
NA	NA	NA	NA	NA	NA	NA	NA	NA
11.50	10.87	10.87	11.22	10.04	10.59	10.82	8.81	10.59
NA	18.30	18.05	18.30	NA	18.25	18.34	17.56	17.25
13.03	13.49	13.68	13.89	14.09	14.31	14.62	14.17	13.39
18.26	17.77	17.48	17.88	17.26	17.85	17.74	16.79	16.26
17.75	17.52	17.21	17.46	16.73	17.13	17.34	16.63	16.51
24.77	24.57	24.66	24.87	25.04	25.22	25.47	24.66	23.40
30.84	30.80	31.01	31.41	31.38	31.80	31.94	31.15	30.92
34.22	34.22	34.41	34.65	34.81	34.91	35.08	35.14	35.37
15.56	15.33	14.87	15.22	14.57	15.20	15.06	14.38	14.28
37.10	37.02	37.10	37.43	37.92	38.54	38.77	37.97	36.53
18.16	17.77	17.44	18.14	18.07	18.96	18.93	16.70	16.72

44.35
47.67
Well Dry

1-Jan-07	1-Feb-07	1-Mar-07	1-Apr-07	1-May-07	1-Jun-07	1-Jul-07	1-Aug-07	1-Sep-07
Well Dry	Well Dry	40.07	39.37	38.94	38.78	39.67	40.00	Well Dry
11.15	10.34	9.91	7.55	8.70	10.22	10.42	12.07	12.89
21.01	20.56	20.27	19.94	19.48	19.17	19.24	20.94	19.50
17.02	16.77	16.58	16.76	16.40	16.15	16.10	16.36	16.46
20.63	19.68	18.8	17.88	16.77	17.27	17.66	18.47	19.24
22.29	21.78	21.38	20.96	20.06	19.76	20.21	20.6	21.04
26.86	26.81	26.44	25.8	24.64	24.08	23.95	24.02	24.30
31.07	30.5	30.04	29.51	29.53	29.58	29.86	30.50	30.89
35.26	35.34	35.24	35.06	34.87	34.84	34.90	35.00	35.09
18.6	18.02	17.81	17.28	16.47	16.16	16.62	17.25	17.54
39.9	39.63	39.35	38.86	38.43	38.06	38.23	38.66	38.92

21.66	21.05	20.38	20.06	19.96	20.72	21.24	21.54
-------	-------	-------	-------	-------	-------	-------	-------

1-Apr-09	4-May-09	1-Jun-09	1-Jul-09	4-Aug-09	2-Sep-09	1-Oct-09	5-Nov-09	1-Dec-09
35.16	33.36	32.96	33.16	34.35	34.62	NA	NA	NA
4.54	4.40	5.93	6.84	6.91	6.47	NA	3.61	3.85
16.00	14.22	11.70	12.45	13.14	13.68	13.91	12.62	11.52
14.94	14.54	13.27	12.31	11.62	11.50	11.18	10.74	9.89
16.00	14.63	13.42	13.61	13.72	13.47	13.63	11.78	10.81
17.50	16.06	14.68	14.43	13.82	13.26	13.07	11.42	10.44
21.43	19.60	17.23	17.22	17.59	17.68	18.13	17.38	NA
27.52	26.49	26.93	26.11	26.16	26.08	26.20	25.24	24.75
31.56	30.03	28.75	28.32	28.32	28.68	29.06	27.37	25.45
13.81	12.35	11.10	11.16	11.35	11.33	11.44	9.21	8.51
36.73	36.40	35.19	34.14	34.31	34.48	34.26	34.07	33.22
16.01	14.47	N/A	14.69	15.74	15.91	17.31	15.34	15.53

1-Jul-11	1-Aug-11	8-Sep-11	4-Oct-11
NA	NA	NA	NA
4.61	8.55	10.50	10.58
9.33	11.08	12.87	13.71
7.03	7.00	7.52	7.93
12.60	13.91	15.73	16.08
8.45	9.92	11.56	12.07
17.82	18.39	19.45	20.10
24.82	26.71	27.59	27.24
21.72	22.44	24.90	26.52
8.43	10.32	11.91	12.40
32.95	33.58	34.23	34.37
14.48	16.72	18.14	18.24

4-Feb-13	1-Mar-13	3-Apr-13	1-May-13
NA	NA	NA	NA
11.90	11.22	9.47	6.32
20.36	20.33	19.75	18.99
13.00	13.06	12.88	12.71
21.23	20.93	20.00	18.46
19.57	19.41	18.74	17.75
27.01	27.12	26.91	26.43
31.85	31.93	31.60	30.93
33.54	33.68	33.66	33.53
17.52	17.21	16.34	14.99
38.35	38.29	38.15	37.89
21.96	21.58	20.56	19.22

9-Feb-15	9-Feb-15	9-Feb-15
NA		
10.28		
17.63		
12.80		
16.92		
17.02		
23.48		
30.94		
35.63		
14.69		
36.38		
17.42		
43.33		
49.14		
Well Dry		

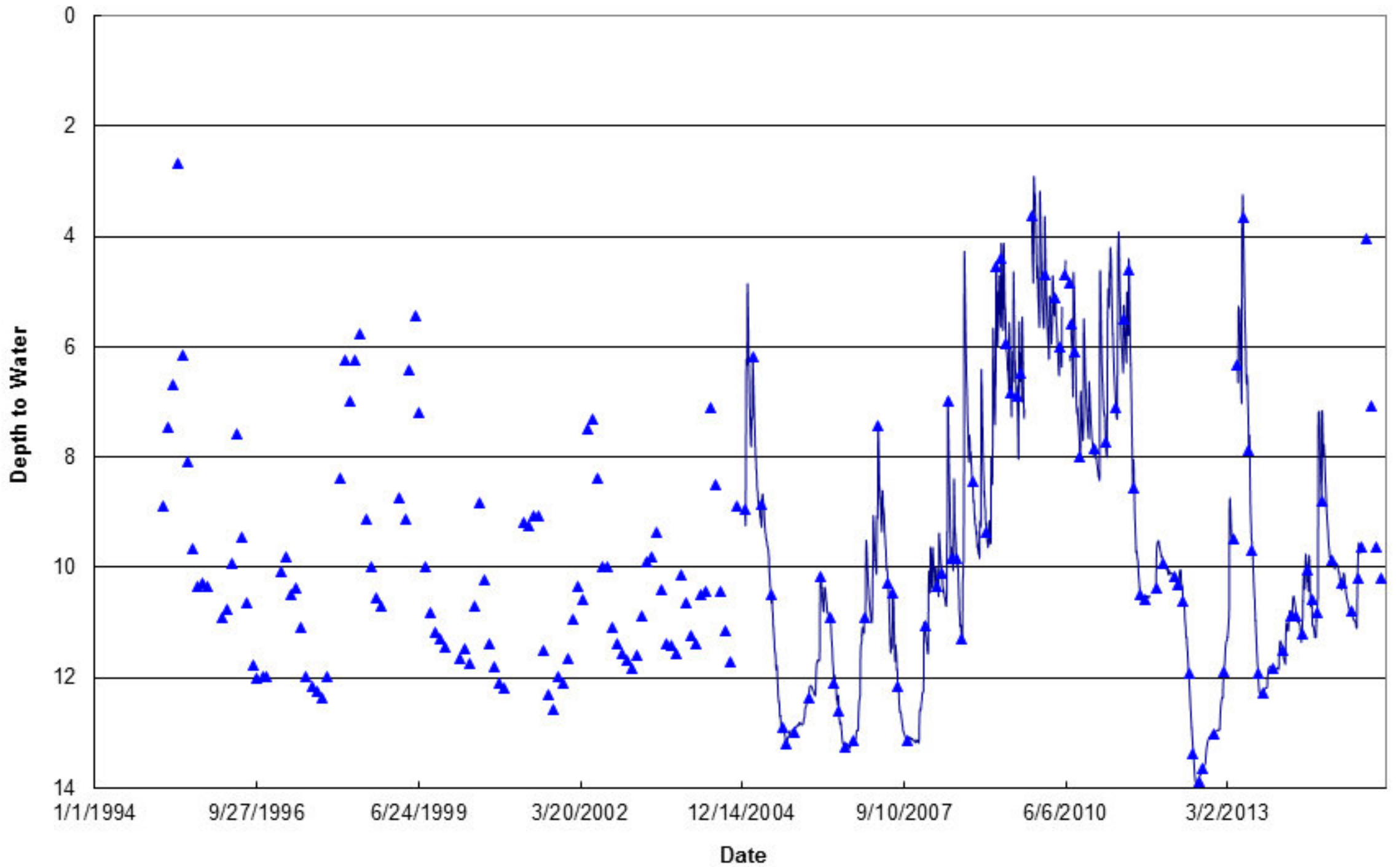
1-Oct-07	1-Nov-07	1-Dec-07
Well Dry	Well Dry	Well Dry
13.13	13.11	13.17
19.76	20.05	20.29
16.20	16.23	16.24
19.49	19.64	19.82
21.15	21.29	21.44
24.52	24.71	24.93
30.85	30.88	30.84
35.25	35.39	35.5
17.75	17.95	18.15
38.80	38.67	38.58
21.6	21.84	22.02

1-Jan-10	1-Feb-10	1-Mar-10
NA	NA	NA
3.90	4.70	5.49
10.77	10.26	10.54
9.05	8.40	7.94
10.64	10.68	11.27
9.65	9.16	9.26
NA	15.44	15.68
24.46	24.03	24.09
24.40	23.74	23.67
8.11	8.11	8.53
32.62	32.23	32.05
15.64	15.94	16.28

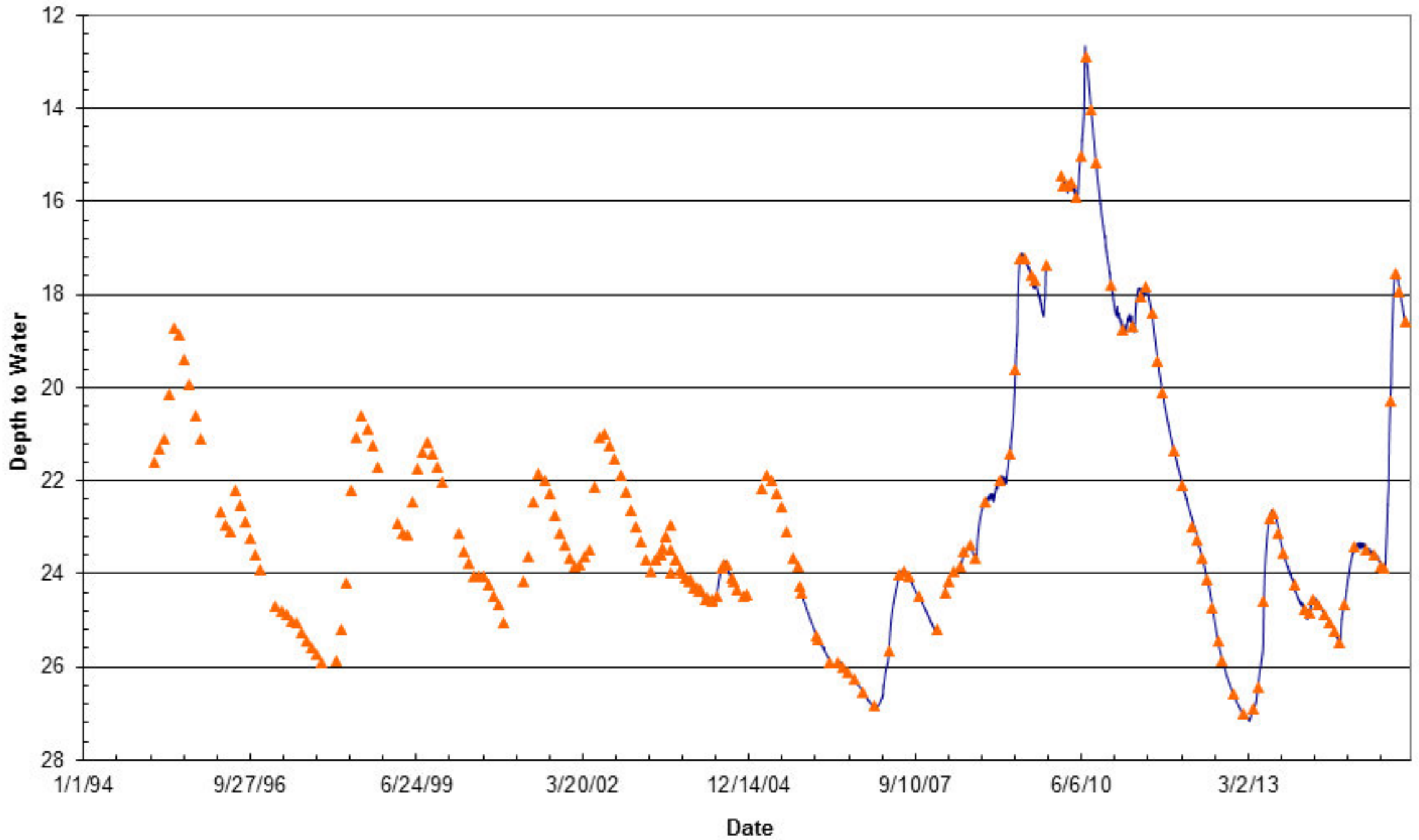
	5-Jun-13	9-Jul-13	1-Aug-13	4-Sep-13	1-Oct-13	3-Dec-13	3-Feb-14	1-Apr-14	1-May-14	4-Jun-14	3-Jul-14	1-Aug-14	5-Sep-14	2-Oct-14	2-Dec-14	9-Feb-15	1-Apr-15	12-May-15	1-Jun-15	6-Jul-15	4-Aug-15	1-Sep-15	1-Oct-15	
	NA	NA	NA	NA	NA	NA	NA	NA	NA	NA	NA	NA	NA	NA	NA	NA	NA	NA	NA	NA	NA	NA	NA	
MTOW-01 Snicarte																								
MTOW-02 Easton	3.65	7.88	9.68	11.92	8.23	11.82	11.50	10.87	10.87	11.22	10.04	10.59	10.82	8.81	10.59	10.28	10.80	10.19	9.62		4.05	7.08	9.63	10.21
MTOW-03 Wildlife Refuge	16.90	15.10	15.42	16.34	16.78	17.48	NA	18.30	18.05	18.30	NA	18.25	18.34	17.56	17.25	17.63	17.79	NA	17.66	15.87	14.23	NA	15.28	
MTOW-04 Sand Ridge	12.37	11.39	11.20	11.53	11.80	12.25	13.03	13.49	13.68	13.89	14.09	14.31	14.62	14.17	13.39	12.80	13.14	13.66	13.71	12.09	10.01	9.63	9.60	
MTOW-06 Tree Nursery	15.54	14.51	15.26	17.63	17.72	17.97	18.26	17.77	17.48	17.88	17.26	17.85	17.74	16.79	16.26	16.92	17.25	17.59	17.56	14.25	13.89	14.35	15.14	
MTOW-07 Rest Area	15.74	15.04	15.51	16.22	16.62	17.21	17.75	17.52	17.21	17.46	16.73	17.13	17.34	16.63	16.51	17.02	17.22	17.26	16.86	14.01	13.51	14.03	14.44	
MTOW-08 Green Valley	24.59	22.82	22.68	23.13	23.57	24.25	24.77	24.57	24.66	24.87	25.04	25.22	25.47	24.66	23.40	23.48	23.58	23.83	23.89	20.29	17.55	17.94	18.57	
MTOW-10 San Jose	29.62	29.41	30.22	32.47	31.42	30.75	30.84	30.80	31.01	31.41	31.38	31.80	31.94	31.15	30.92	30.94	31.03	30.97	30.84	28.81	29.44	28.79	28.55	
MTOW-11 Mason City	30.08	33.05	33.01	33.19	33.39	33.83	34.22	34.22	34.41	34.65	34.81	34.91	35.08	35.14	35.37	35.63	35.74	35.84	35.90	35.39	34.19	34.02	33.92	
MTOW-12 Hahn Farm	12.41	12.41	13.06	14.18	14.62	15.11	15.56	15.33	14.87	15.22	14.57	15.20	15.06	14.38	14.28	14.69	14.86	14.71	14.33	10.79	11.04	11.94	12.58	
MTOW-13 Talbott Tree Farm	36.73	35.32	35.69	36.46	36.76	36.88	37.10	37.02	37.10	37.43	37.92	38.54	38.77	37.97	36.53	36.38	36.56	36.82	36.97	36.61	34.54	34.08	34.05	
MTOW-01A Snicarte #2	15.54	16.13	16.47	18.04	18.04	17.75	18.16	17.77	17.44	18.14	18.07	18.96	18.93	16.70	16.72	17.42	17.71	17.81	17.49		16.24	16.83	17.07	
MTOW-14 Mason City Deep															44.35	43.33	43.41	43.54	43.46	42.49	43.51	42.60	42.17	
MTOW-15A Ellsburry Lake Deep															47.67	49.14	49.36	49.45		48.39	40.05	49.11	47.50	
MTOW-15B Ellsburry Lake Shallow															Well Dry	Well Dry	Well Dry	Well Dry		Well Dry				

	Stickup	2-Dec-14	9-Feb-15	1-Apr-15	12-May-15	1-Jun-15	1-Jul-15	4-Aug-15	1-Sep-15
MTOW-14 Mason City Deep	1.8	44.35	43.33	43.41	45.34	43.46	42.49	43.51	42.60
MTOW-15 Ellsbury Lake Deep	2.3	47.67	49.14	49.36	51.75		48.39	40.05	49.11
MTOW-15I Ellsbury Lake Shallow		Well Dry	Well Dry	Well Dry	Well Dry		Well Dry		

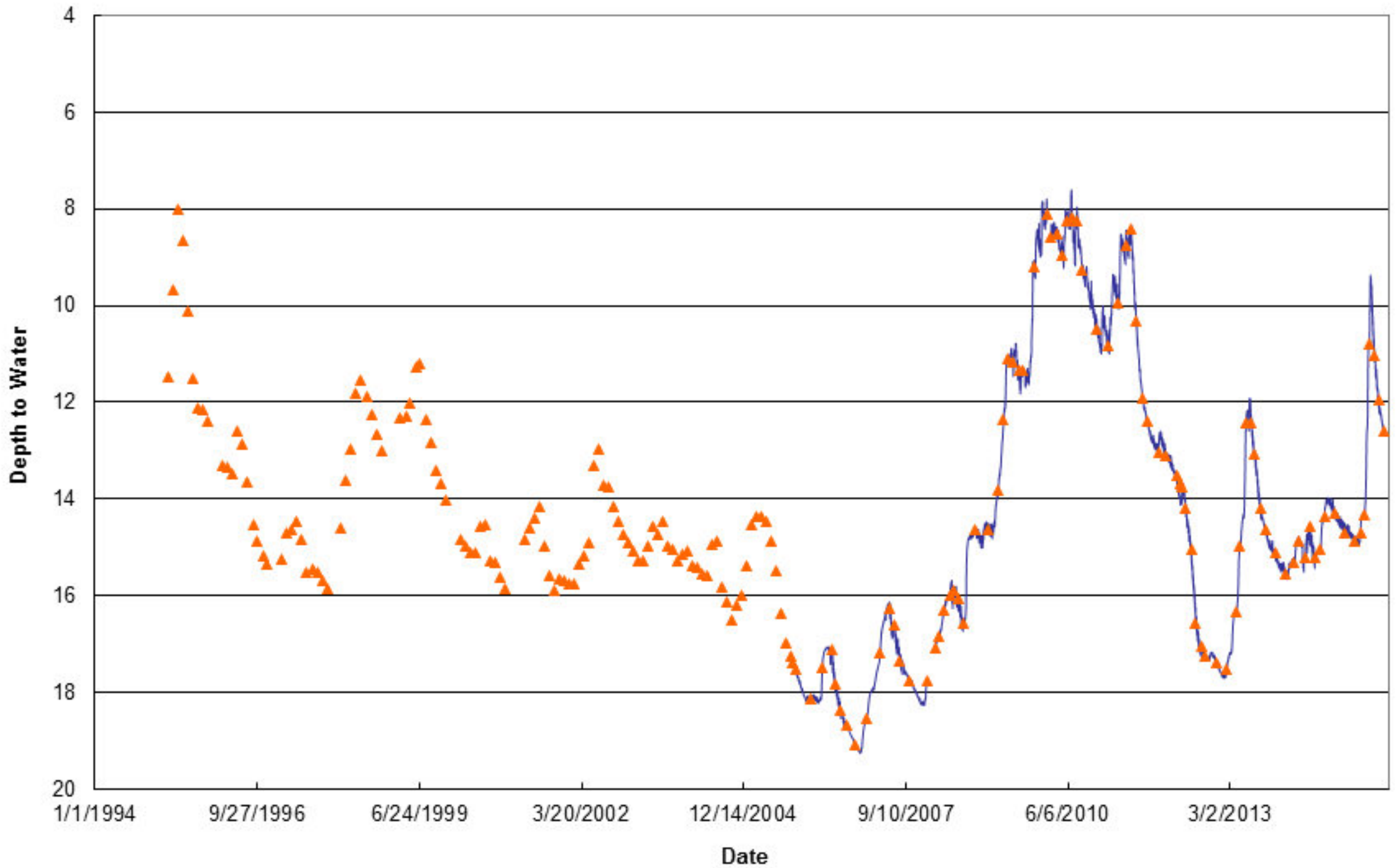
Depth to Water at Easton (MTOW-02)



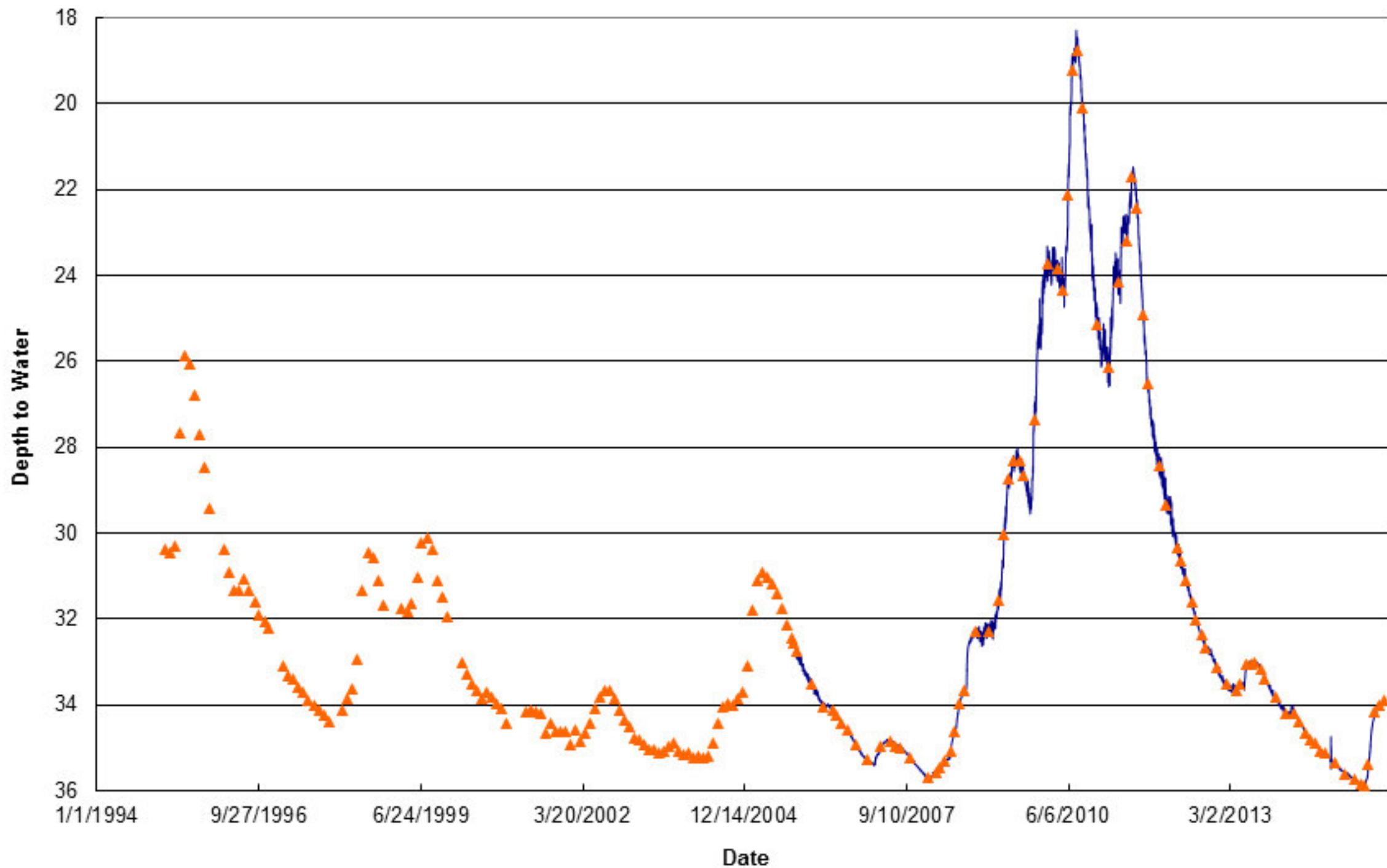
Depth to Water at Green Valley (MTOW-08)



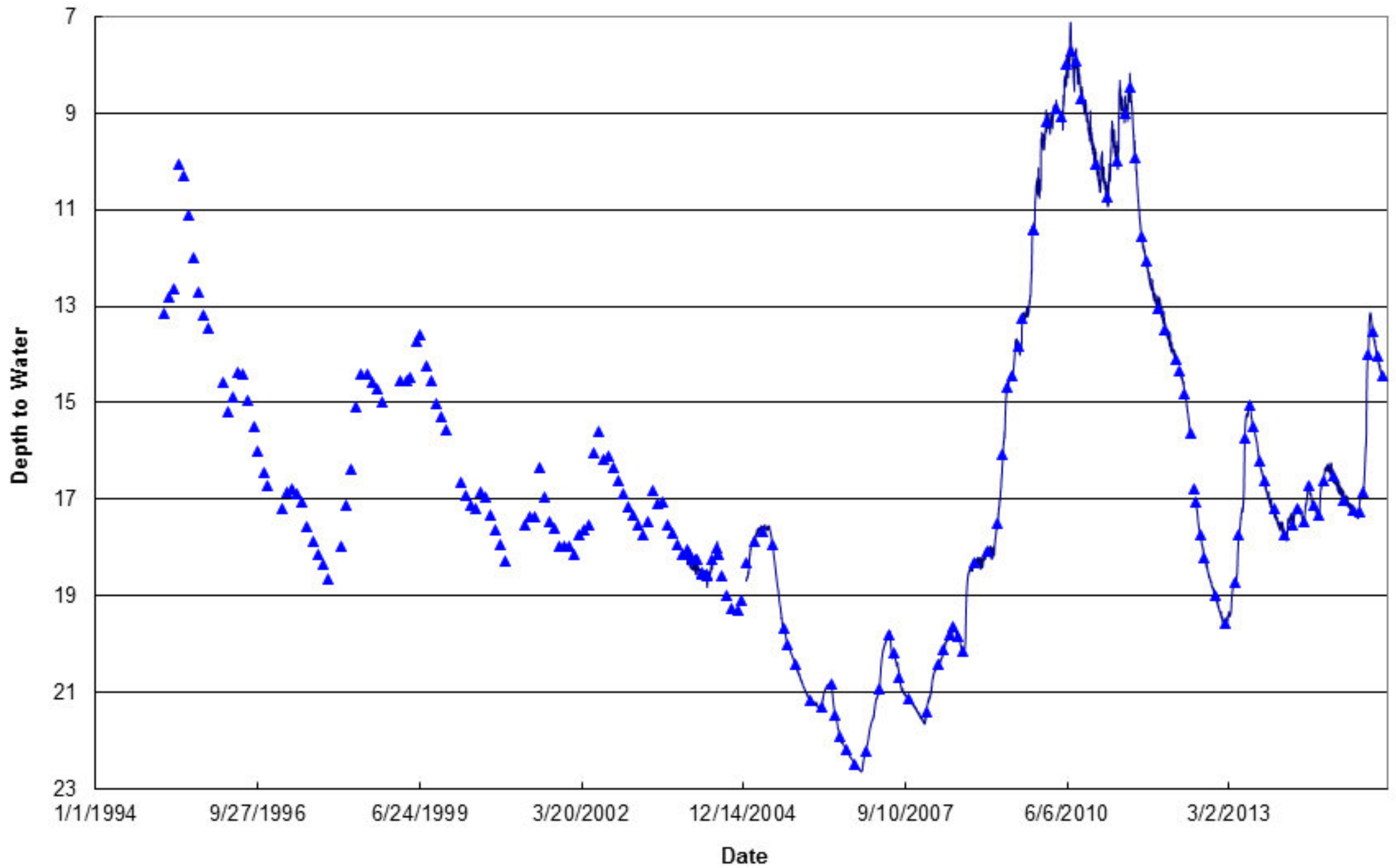
Depth to Water at Hahn Farm (MTOW-12)



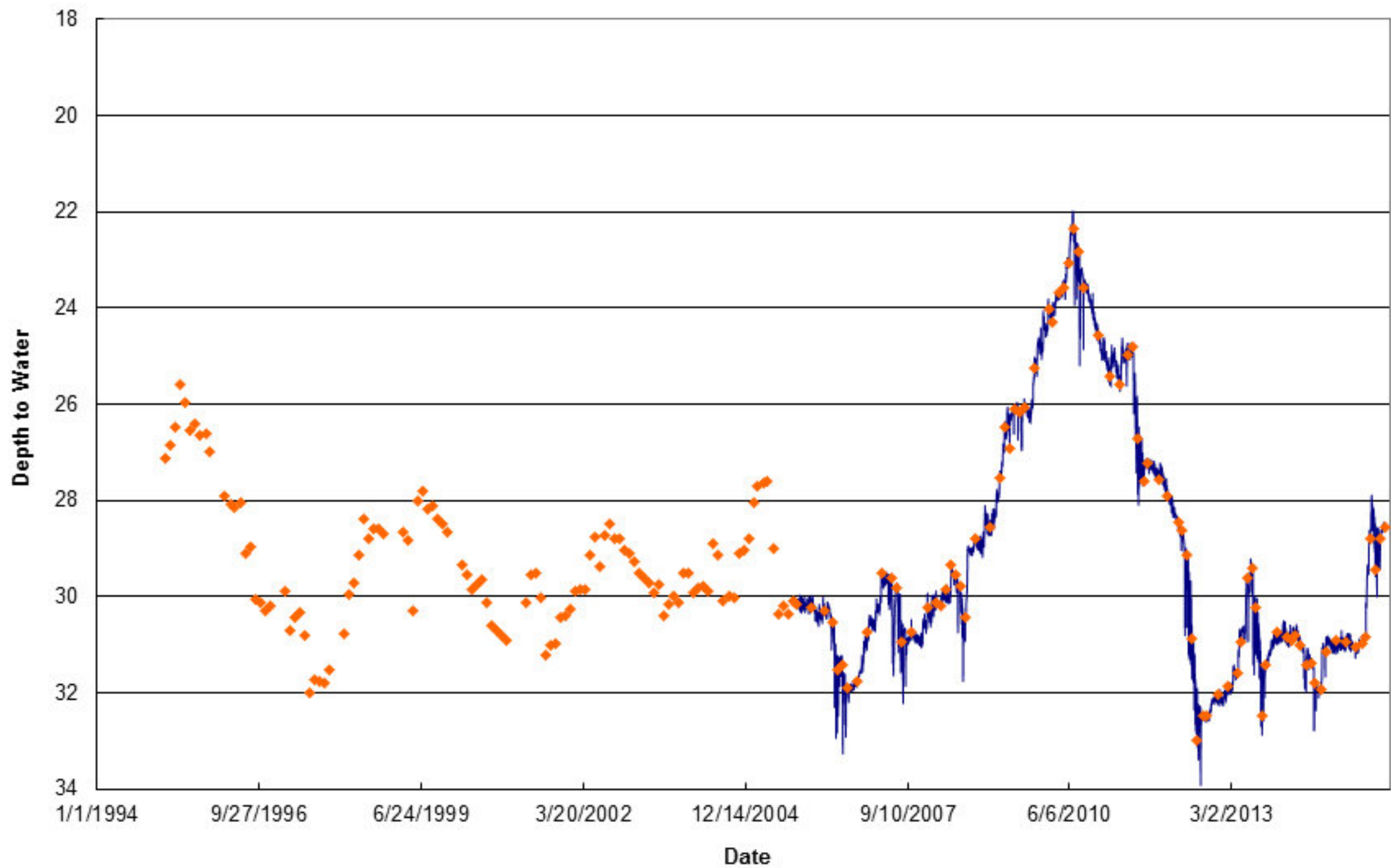
Depth to Water at Mason City (MTOW-11)



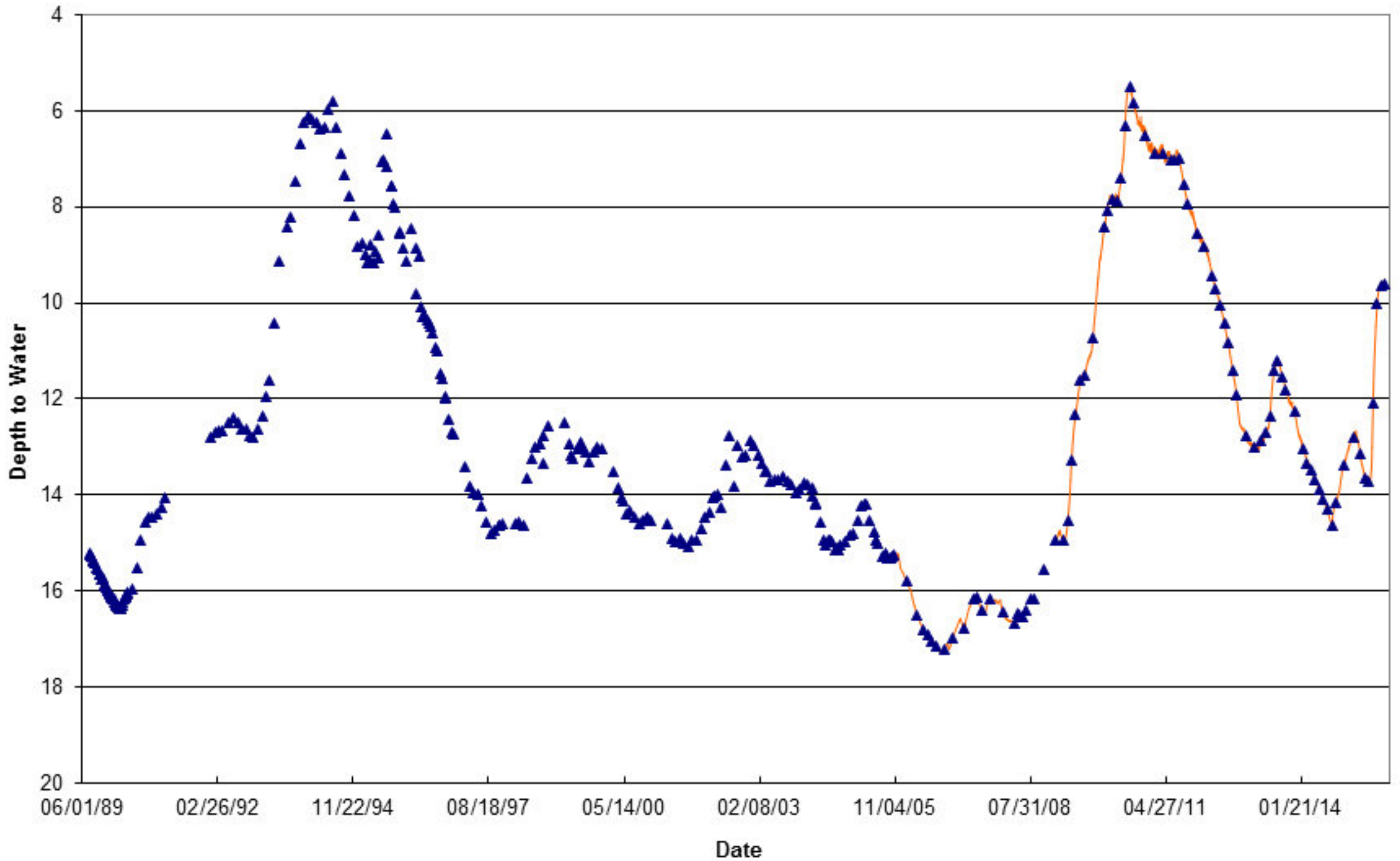
Depth to Water at 136 Rest Area (MTOW-07)



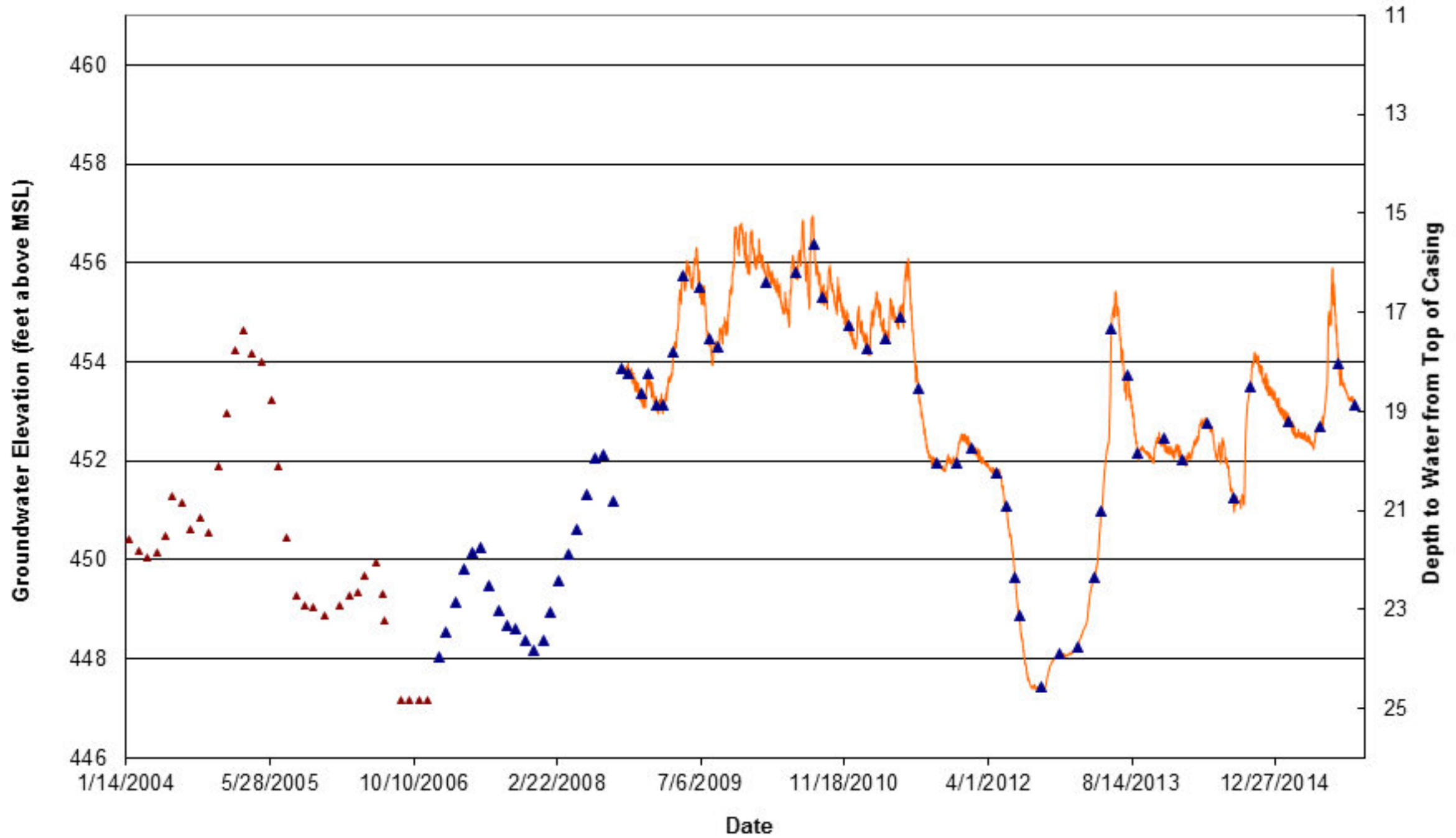
Depth to Water at San Jose (MTOW-10)



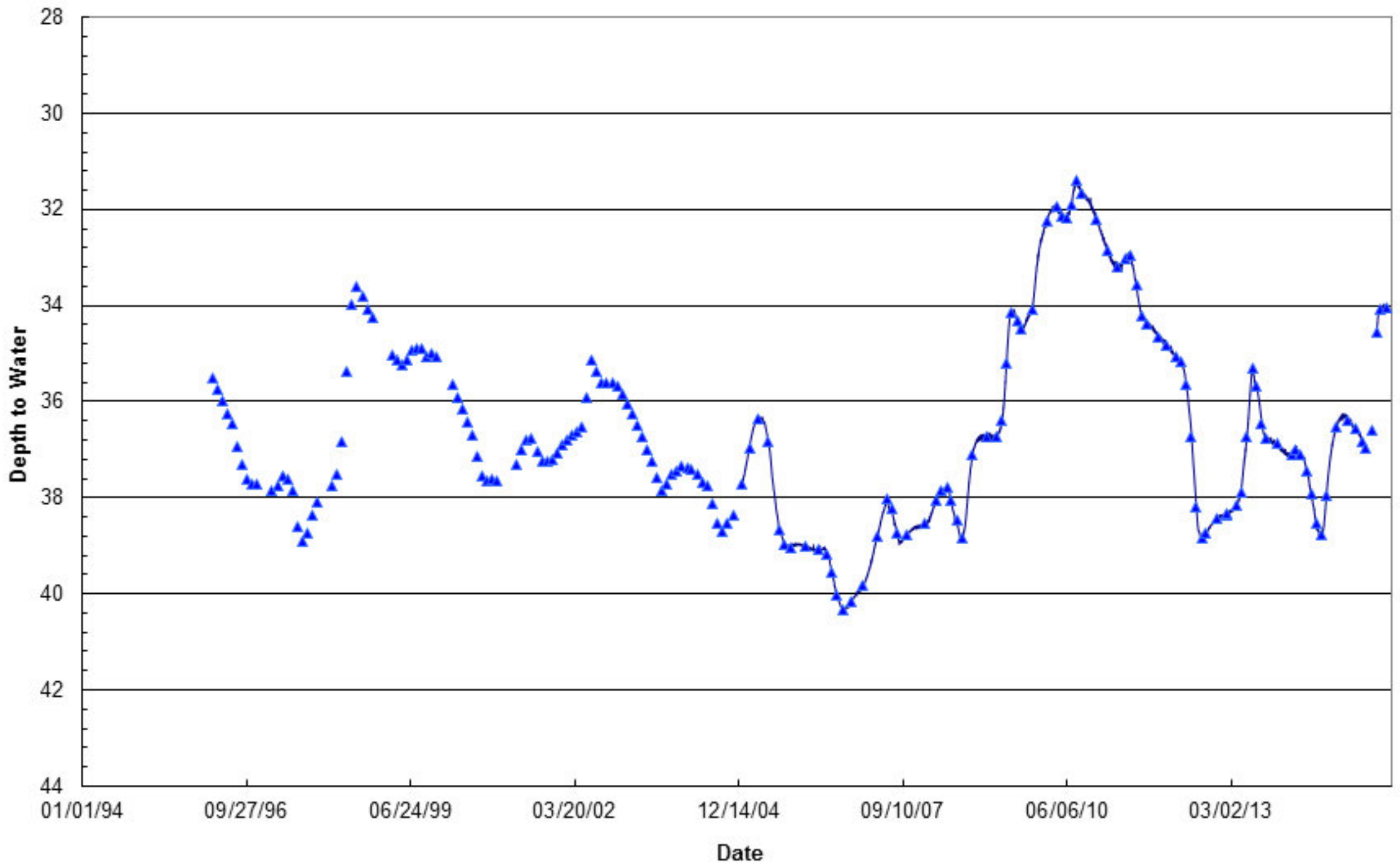
Depth to Water at Sand Ridge (MTOW-04)



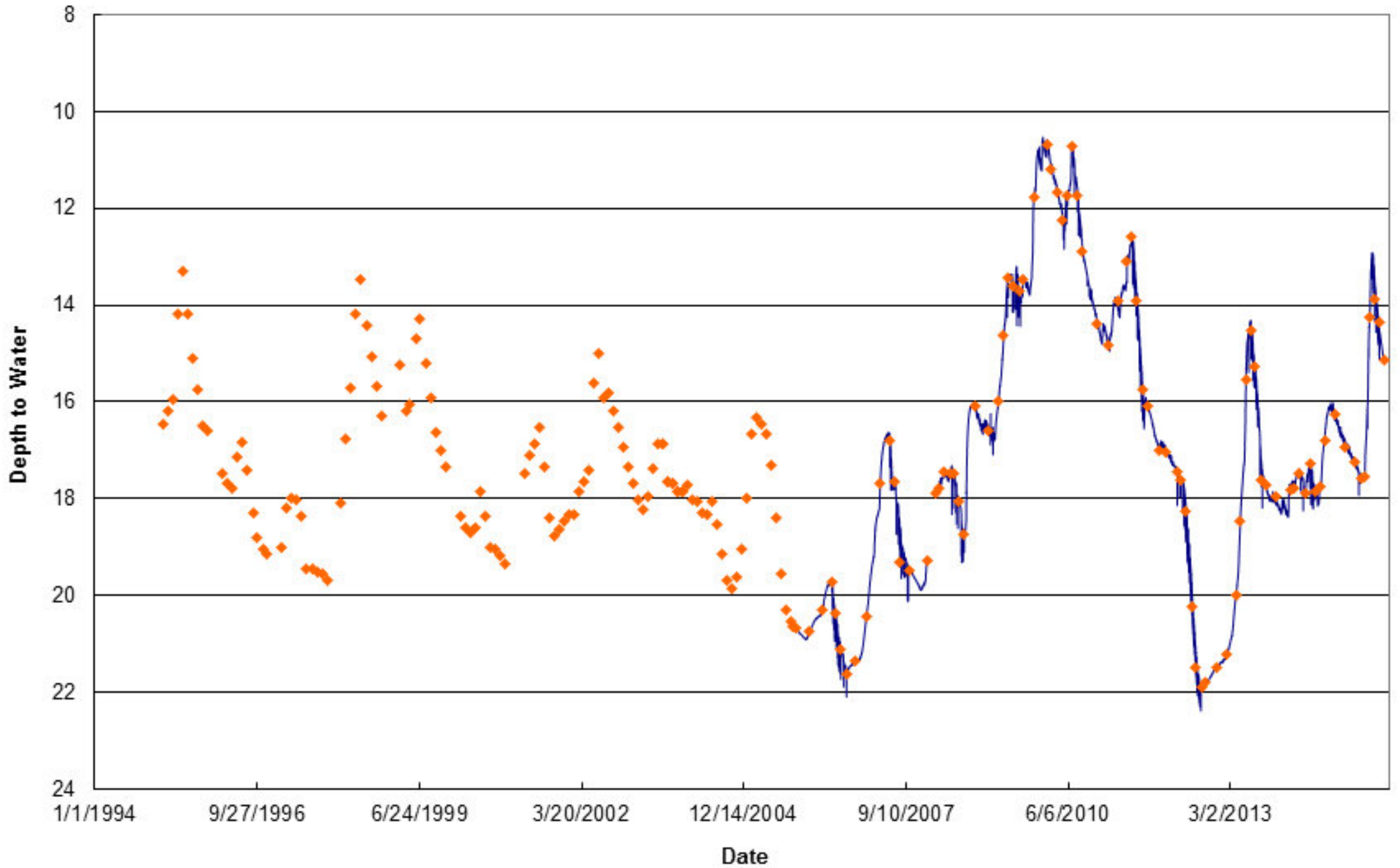
Snicarte #2



Depth to Water at Talbott Tree Farm (MTOW-13)



Depth to Water at Tree Nursery (MTOW-06)



Depth to Water at Mason County Wildlife Refuge (MTOW-03)

